



Stratfield Mortimer Parish Council

Planning and Highways Committee 25/06/2026

Agenda Item 26/023.4

Report on Speeding in the Village

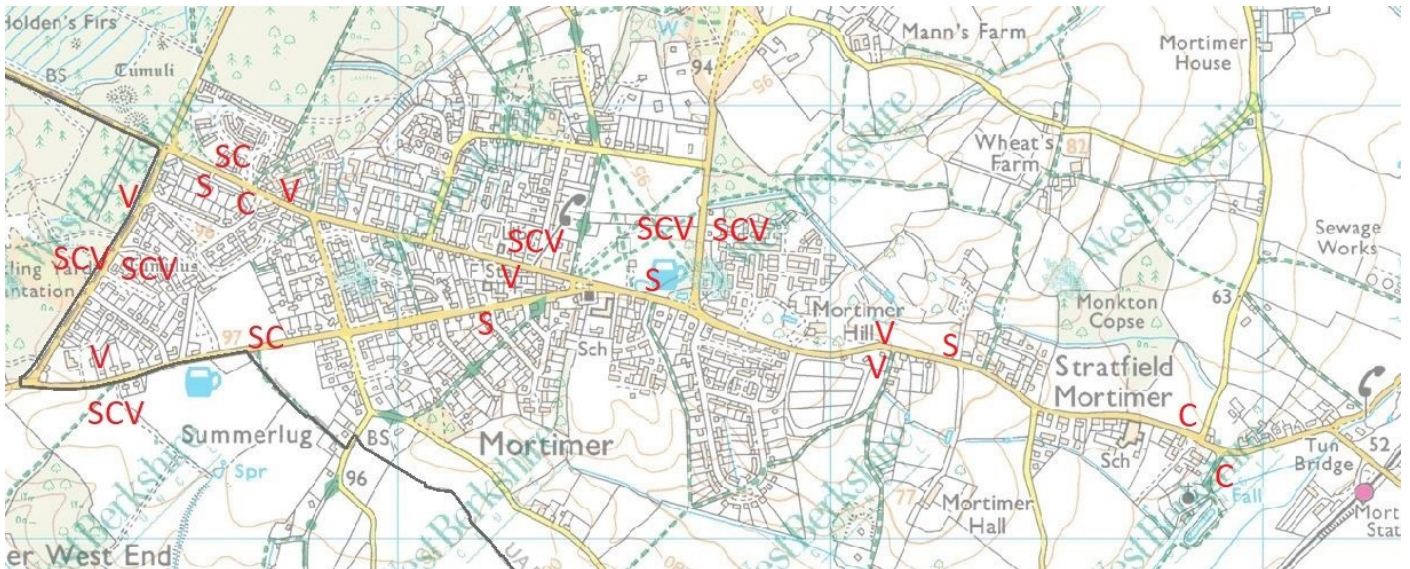
Introduction

Stratfield Mortimer Parish Council owns and operates three speeding devices:

- A speed indicator device (SID) which tells drivers of their speed and records numbers of vehicles in 5 mph bins. This is usually manned and used for deployments of an hour or so. Sites approved by West Berkshire Council (WBC).
- An automatic speed camera (ASWC) which operates under Community Speed Watch protocols. It needs two operators and deployments are usually of 60 to 90 minutes. Sites approved by Thames Valley Police (TVP).
- Two Smiley Vehicle Activated Signs (Smiley SIDs) which apart from the visual showing of speed and a coloured face, record various aspect of speed about each approaching vehicle. Sites approved by WBC, devices must be moved from a site after 2 to 3 weeks. These operate 24 hours a day.

This document aims to bring together these data sources to give an overview of speeding in Mortimer.

Sites



The sites for deployments of SID (**S**), Smiley SIDs (**V**) and the ASWC (**C**). The letters are shown on each side of the road, so for example on the Street **V** is possible for both directions near Kiln Lane but **S** is only available for eastbound traffic. Recent additions to the map (not shown) are **V** in both directions on The Street at the junction with Pitfield Lane and **V** for incoming traffic on West End Road approaching the Drury Lane / Stephens Road junction.

Data and Reports from the Smiley SIDs

The Smiley SIDs capture a lot of data. On an empty road first contact with a vehicle is normally made about 90 metres away. It records three reliable speeds for each vehicle: entry speed, peak speed and the average speed whilst that vehicle is in contact. Peak speed is the normal measurement to use. If vehicles are close together then the SID will switch from one to the next at different places so that speeds are measured over different distances for each vehicle.

The system has a standard report format. The first page is an overall summary for the duration of the deployment. That page for the first deployment at WESTW1 (far end of West End Road going out of the village) is below. Counts of vehicles are given in 5 mph bands (classes). Midnight to noon has a purple background and noon to midnight a pink background, with maximum values in those periods in bold. (Increase the magnification / zoom if you want to see the numbers more clearly).

Traffic Report
Traffic Overview from Mon Feb 2 2026 to Mon Feb 16 2026
Vehicle Speed Classes (Mph)

	<15	15 20	20 25	25 30	30 35	35 40	40 45	45 50	50 55	55 60	60 65	65 70	>70	Total	85th Percentile
00:00	8	0	0	15	34	34	28	10	5	4	0	1	1	140	44.0
01:00	10	0	0	4	17	19	9	6	3	1	0	0	0	69	42.6
02:00	2	0	0	3	8	9	6	4	1	0	0	0	0	33	44.1
03:00	0	0	0	0	4	10	14	6	0	2	1	0	0	37	45.7
04:00	0	0	0	2	20	14	18	6	2	1	0	0	0	63	43.9
05:00	10	0	2	31	98	108	72	46	16	3	0	0	0	386	44.4
06:00	7	3	15	371	778	473	262	77	19	11	2	2	0	2020	39.8
07:00	2	6	38	722	1439	579	148	33	5	4	0	0	0	2976	36.2
08:00	0	4	9	584	1148	475	168	36	10	0	1	0	0	2435	37.0
09:00	10	5	17	363	771	341	147	46	12	1	0	2	0	1715	37.9
10:00	7	7	15	371	731	383	150	31	11	0	0	0	0	1706	37.8
11:00	22	4	11	424	785	422	146	42	8	3	0	1	0	1868	37.7
12:00	9	5	18	436	837	486	175	39	5	4	0	0	0	1994	37.8
13:00	7	8	19	371	814	444	184	50	6	3	1	1	0	1908	38.3
14:00	1	3	13	437	785	532	183	44	12	1	0	0	0	2011	38.1
15:00	9	2	14	421	787	509	190	59	7	2	0	0	0	2000	38.4
16:00	6	5	17	413	918	492	191	45	8	2	0	0	1	2098	38.1
17:00	6	1	29	523	946	444	173	27	9	1	0	0	0	2159	37.4
18:00	10	3	29	358	792	435	135	27	4	5	0	0	0	1798	37.5
19:00	16	1	22	233	436	320	128	44	11	0	0	0	0	1209	39.0
20:00	14	0	6	99	256	245	93	38	5	2	0	0	0	758	40.1
21:00	4	0	3	74	195	139	79	31	11	2	0	0	0	538	40.9
22:00	1	2	2	43	138	115	71	46	16	1	3	1	1	440	44.1
23:00	0	0	2	21	47	58	35	23	11	4	3	2	0	206	46.0
AM Total	78	29	107	2890	5833	2867	1168	343	92	30	4	6	1		
PM Total	83	30	174	3429	6951	4199	1635	473	105	27	7	4	2		
Total	161	59	281	6319	12784	7066	2803	816	197	57	11	10	3		
Percent	0.53%	0.19%	0.92%	63.19%	41.82%	23.12%	9.17%	2.67%	0.64%	0.19%	0.04%	0.03%	0.01%		
Total Vehicles : 30567															
30th Percentile : 29.8 MPH															
50th Percentile : 32.0 MPH															
85th Percentile : 38.3 MPH															
95th Percentile : 42.6 MPH															
Average Speed : 33.4 MPH															
Highest Speed : 73.3 MPH															
Speed Limit: 30 Mph															
Total Over Speed Limit: 77.7 % (23747 / 30567)															

It shows a total of 30,567 vehicles, an average speed of 33.4 mph, an 85th percentile of 38.3 mph and a maximum speed of 73.3 mph. Numbers and the 85th percentile are also broken down by hour. 77.7% of vehicles were over the 30 mph limit. Note that the 85th percentile is above 40 mph from midnight to 6am and again from 8pm to midnight. The largest hourly volume of traffic was 2976 vehicles between 7am and 8am. This is for the full period of 14 days so the daily mean is 213 vehicles per hour.

The report also includes various graphs. The table and graphs can also be produced for each individual day, so the full report for this deployment had 95 pages.

The summary statistics for each deployment have been transferred to a spreadsheet with the addition of two other pieces of information obtained by looking at the records for individual days. These are the maximum daily volume of vehicles and the timing of the maximum speed for the deployment. Here the maximum daily volume was 2824 vehicles and the maximum speed of 73.3 mph occurred between 0000 and 0100 on Friday 13th February.

The details of the Smiley SID sites are given in Appendix 1 and the summary results for the 29 deployments so far are given in Appendix 2.

This report will concentrate on the overall picture of the data. Emphasis is placed on four measures:

the 85th percentile (the speed at which 85% are below and 15% above), the 95th percentile (the speed which 5% exceed), the maximum daily volume of vehicles and the percentage exceeding the 30mph limit. The 95th has been chosen rather than the maximum speed recorded as the latter in some cases may well be the result of an emergency vehicle at high speed.

Consistent readings at sites

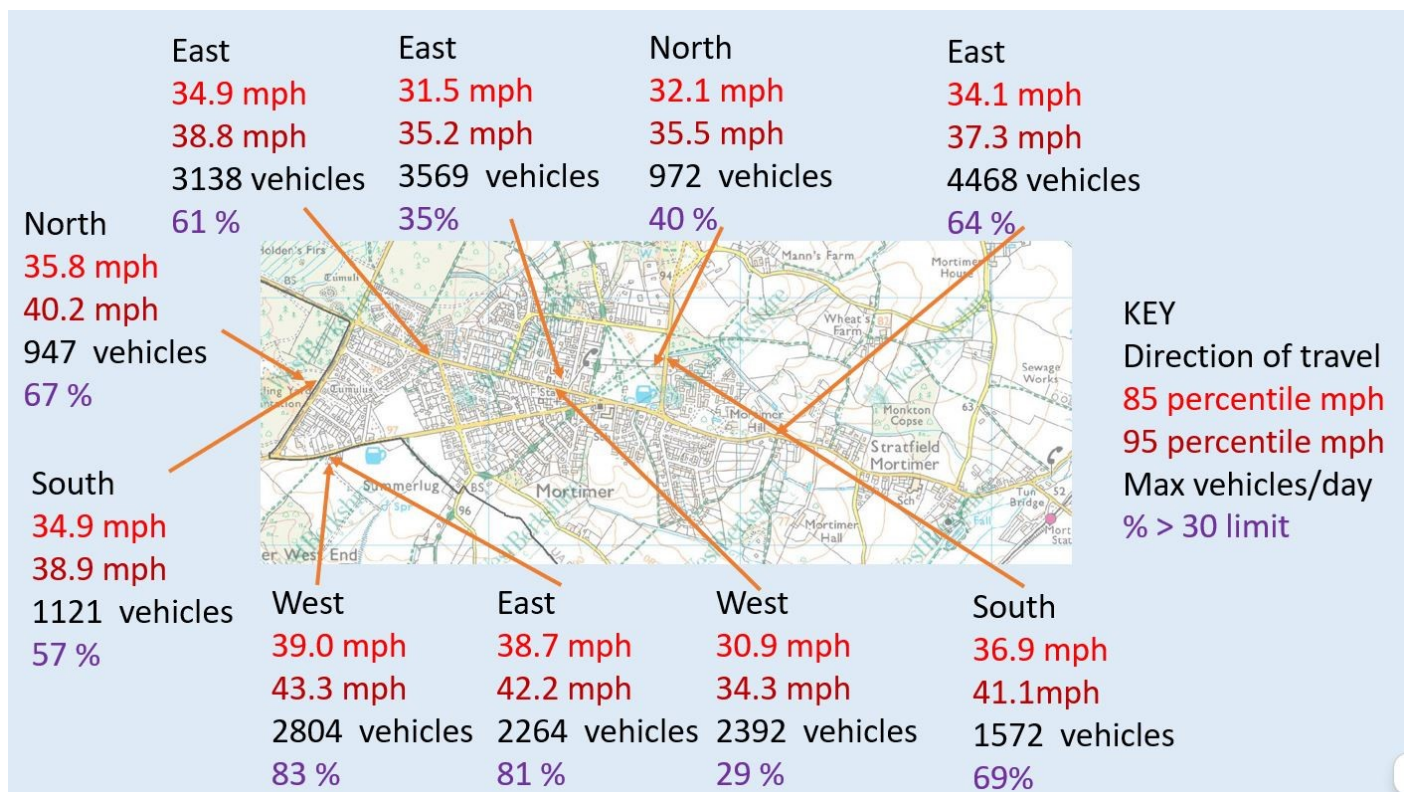
As deployments have taken place over 6 months with different weather conditions etc many factors may influence comparisons of sites. But at a site, results tend to be consistent.

For example, site GR (coming in from Burghfield near the Groves Lea mini roundabout) over 8 deployments the 85th percentile varied from 34.0 to 34.9 mph and the percentage over 30 mph varied from 52.6% to 61.5%.

At site KILNE (The Steet downward near Kiln Lane) over 5 deployments the corresponding ranges were 36.5 to 37.3 mph and 56.4 to 63.1 %.

Both these sites showed very slightly faster speeds in the latest results but this may be due to longer daylight etc between February and June.

Comparison of Sites



The figure above shows the results for the latest deployment at each site.

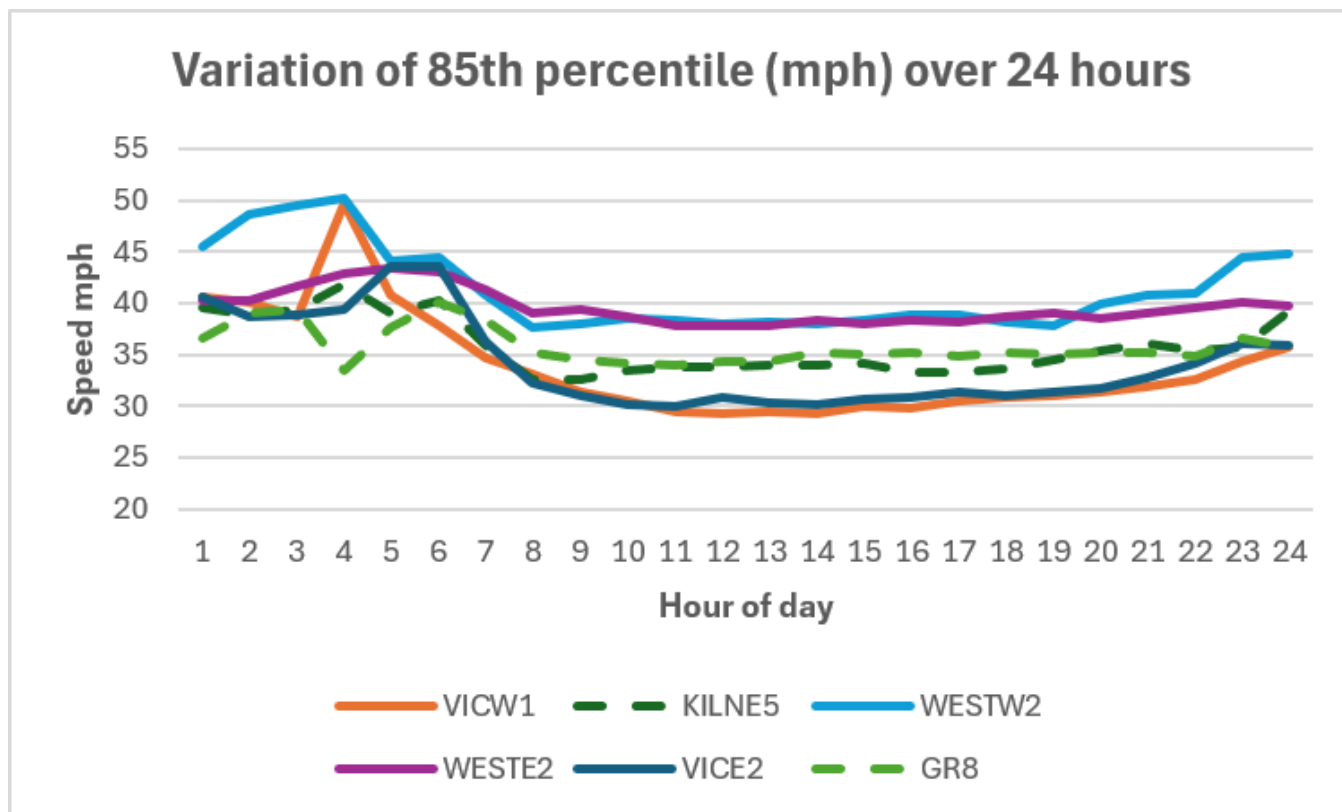
In Victoria Road near the library for westbound traffic the 85 percentile was 30.9 mph with 29% of vehicles exceeding the 30 mph limit. Eastbound these figures rise slightly to 31.5 mph and 35%. At the west end of Victoria Road near Groves Lea the figures rise to 34.9 mph and 61%. These are similar to The Street near Kiln Lane with 34.1 mph and 64%.

The far end of West End Road shows the highest speeds with similar figures in both directions with 39.0 mph and 83% west bound and 38.7 mph and 81% eastbound.

St Catherines Hill southbound is similar to Groves Lea (34.9 mph and 57%) with higher speeds northbound (35.8 mph and 67%). Hammonds Heath coming from Burghfield has relatively high speeds (36.9 mph and 69%). There are lower figures in the other direction (32.1 mph and 40%), perhaps because the speed is visible as soon as you turn into Hammonds Heath at the war memorial.

The 95th percentile exceeds 40 mph in both directions in West End Road (43.3 mph westbound and 42.2 mph eastbound), southbound on Hammonds Heath (41.1mph) and northbound on St Catherines Hill (40.2 mph). It is between 37 and 39 mph southbound on St Catherines Hill, The Street near Kiln Lane and Victoria Road near Groves Lea.

Variation of speeding over 24 hours



The figure above shows the 85th percentile for some recent deployments. Note the speed axis starts at 20 mph.

The top two lines (light blue and violet) are for the two directions on West End Road. Between 8am and 8pm the percentile is around 38 mph. After 8pm it increases with high values up to 50mph in the early hours of the morning. This is worst in the west direction (light blue line).

The two dashed lines are for Victoria Road near Groves Lea (light green) and The Street near Kiln Lane (dark green). These are similar patterns around 34 mph for much of the day, but near Kiln Lane has higher values around 4 am to 5am.

The bottom two lines are Victoria Road near the library (dark blue travelling east and orange traveling west). During much of the day the percentile is about 30 mph going east and 29mph going west. Both increase at night with values increasing from 10 pm, staying high until about 7am and then decreasing slowly to 10am.

Speeds above 95th percentile

Though only 5% of vehicles exceed the 95% percentile it is worth looking the speed of these vehicles. This has been done for some sites. Results are expressed as vehicles per day in each speed range.

Table 1. Average number of vehicles per day in each speed range.

Speed range mph	WESTW1	WESTW2	WESTE2	KILNE5
45 to 50	58	76	37	17
50 to 55	14	22	6	2.4
55 to 60	4	5	1.3	0.5
Over 60	1.7	1.0	0.5	0.1
Total	77.7	104	44.8	20

For West End Road outgoing we have totals of 78 and 104 cars per day exceeding 45 mph, most in the range 45 to 50 mph but still appreciable numbers between 50 and 55 mph. Incoming on West End Road has fewer vehicles (45 per day) over 45 mph. In both positions such speeding occurs throughout the 24 hours but with little from 11pm to 4am when vehicle numbers are low. For The Steet near Kiln Lane there is an average of 20 cars per day over 45 mph with highest numbers between 5 am and 7 am and from 5pm to midnight.

Maximum speeds recorded during each deployment and when they occurred are included in the summary of results (Appendix 2). They range from 53.6 mph to 89.8 mph with 10 instances of speeds greater than 70mph. Some of these are probably emergency vehicles, I have certainly seen such vehicles in Victoria Road.

Comparison of Entry, Peak and Average Speeds

The speeds quoted so far are the peak speeds of each vehicle, as would normally be used in prosecution. The peak speed is on average about 0.8 mph higher than the entry speed. This suggests that SID sees the vehicle and records the entry speed before the driver sees the SID.

The average speed is lower than the peak speed (which it must be unless the speed is constant!). Some comparisons are given in Table 2 which shows the 85th percentile speeds and the percentage exceeding the 30 mph limit.

Table 2. 85th percentile speeds and the percentage of vehicles exceeding the 30 mph limit based on peak and average speeds.

Deployment	85 th Percentile (mph)		Percentage exceeding 30 mph	
	Peak	Average	Peak	Average
GR8	34.9	32.6	61.5	39.2
KILNE5	34.1	31.6	63.9	37.5
WESTW2	39.0	36.7	82.5	65.5
WESTE2	38.7	35.7	81.2	60.3
VICE2	31.5	29.7	34.9	19.1
VICW1	30.9	28.9	29.2	14.6

Both measures show that vehicles are slowing down as they approach the SID. On average, there is about 2.3 mph reduction in the 85th percentile and substantial reductions in the percentage exceeding the 30 mph limit. It is possible that some of the reduction is due to other factors, such as parked cars by the café in Victoria Road but I think it is reasonable to conclude that the SIDs do have a slowing effect. This could be tested as the SIDs can be set to record speeds without displaying the speed. Speeds remain high in both directions on West End Road.

The Older SID

Dudley Ives continues to deploy the older SID, typically about 10 times a month. Some of the sites are not covered by the Smiley SIDs, such as West End near Aborn Parade, The Street opposite Tower Gardens and

Victoria Road westwards opposite College Piece. At the first two sites most vehicles are under 32 mph with a few at 40 mph. At the Victoria Road / College piece site speeding is common in the early morning with many at 35 to 40 mph and 15 or more per hour at over 40 mph.

At other sites such as St Catherines Hill, West End Road at Alfred Palmer incoming, West End Road outgoing at the Farm Gate, Hammonds Heath. The SID results mirror the Smiley SID reports with substantial speeding in both directions on West End Road.

Dudley's deployments are valuable in that he does not duplicate where the Smiley SIDs are and his SID pops up at random at other sites reinforcing the message that SMPC cares about speeding. However, Dudley has recently commented that there is a developing tendency among some drivers to completely ignore the SID and not show any sign of slowing down, probably because they are aware that there is no penalty or enforcement. He is of the opinion that enforcement, such as warning letters from the ASWC sessions or police action is required.

The Automatic Speed Watch Camera (ASWC)

The ASWC was first used in March 2023 and since then we have reported 1108 vehicles to Thames Valley Police who send out warning letters. Vehicles are reported if doing 36 mph or more. Information is stored on the Community Speedwatch site (minus number plates) so there is access to the exact time, speed, make and colour of each vehicle.

Part of the summary of sessions is shown below.

	Date	1st Offence Location	Operators	Limit (Accuracy)	Offenders (Percent)	Unknown (Percent)	Passing (Percent)	Letters Comp Sent	Canc	
Details	01-04-2026	16:00- >18:00	Michael & Stewart	30	29 (93%)	0 (0%)	220(13.2%)	28	✓	
	Wednesday	West End Road At farm gate and public footpath to West End Farm at Travellers Co								
Details	16-03-2026	15:30- >17:30	Michael & Stewart	30	37 (100%)	0 (0%)	612(6.05%)	37	✓	
	Monday	West End Road Alongside the Alfred Palmer Memorial Field								
Details	21-08-2025	07:00- >09:30	Amanda & Michael	30	10 (100%)	0 (0%)	225(4.44%)	10	✓	
	Thursday	The Street At entrance to farm field and a pillbox								
Details	20-08-2025	07:00- >09:30	Graham & Michael	30	4 (100%)	0 (0%)	105(3.81%)	4	✓	
	Wednesday	Victoria Road On verge near to WBC Library								
Details	11-07-2025	07:00- >09:00	Stewart & Michael	30	34 (97%)	0 (0%)	194(17.5%)	32	✓	
	Friday	West End Road At farm gate and public footpath to West End Farm at Travellers Co								
Details	03-07-2025	07:00- >09:00	Amanda & Michael	30	3 (67%)	0 (0%)	210(1.43%)	2	✓	
	Thursday	The Street Near the byeway to St Marys Church								
Details	27-06-2025	16:00- >18:00	Nicholas & Michael	30	28 (96%)	0 (0%)	230(12.2%)	27	✓	
	Friday	West End Road Alongside the Alfred Palmer Memorial Field								
Details	27-06-2025	16:00- >18:00	Michael & Nicholas	30	0 n/a	0 (0%)	Unknown	0	✓ ⚠	
	Friday	West End Road Alongside the Alfred Palmer Memorial Field								
Details	26-06-2025	07:00- >09:00	Peter & Michael	30	12 (100%)	0 (0%)	56(21.4%)	12	✓	
	Thursday	St Catherines Hill On grass verge just after the junction with Birchland Close i								

Sites have to be approved by TVP. Sessions have to be approved in advance and there must always be two operators present. We have tended to concentrate on the sites where speeding is a known problem. Most sessions have taken place in the morning and afternoon 'rush hours'; between 7 and 9 am and between 4 and 6 pm. I usually book sessions for two hours but most sessions last between 60 and 90 minutes.

Table 3. The number of vehicles reported to TVP (Speeds of 36 mph or greater) in each session at each site for AM and PM sessions. Note the durations of the sessions vary.

Site	AM	PM
Farm Gate West End Rd (West)	34 63 28 29 28 16 23 23	29 30 36 35 30
Alfred Palmer West End Rd (East)	8 22 32 6 16	37 28 27 37 15 9 11 8 25 11 15 21 51 42
St Catherines Hill (South)	12	9 5 22 9
St Catherines Hill (North)	18 19 3	18 13
Hammonds Heath		Out going 4 Incoming 12 15
College Piece incoming	3 3	6 5 1 14
College Piece outgoing	5 18	1
Horse and Groom (East)	3	2
Library (East)	4	
Pillbox bottom of The Street	10 2	2
St Marys triangle (incoming)	3	

For clarity, consider the farm gate site in West end Road. The latest AM session gave 34 offenders, the one before that had 63 etc. The AM sessions will include cars travelling to AWE. For most cases the exact duration of the session and the total number of vehicles passing are available. There are similar numbers of offenders for the PM sessions which are vehicles going west and are probably nothing to do with AWE.

At Alfred Palmer there tend to be more offenders in the PM sessions than in the AM sessions. St Catherines Hill has surprising large number of offenders given the lower flow of traffic than on West End Road. This can be seen on the green print out above where the last line shows 12 offenders out of 56 vehicles (21.4%).

The number of offenders at the other sites are relatively low.

The CSW site retains a record of high speeds (1.5 times the limit)in the last year (see below).

Between 2025-06-21 and 2026-06-21 with a minimum speed of 1.5*Limit mph										
Reg #	Speed % > lim	Manufacturer	Colour	Location	Model	Date	Time	DVLA	Status	Tax
*****	100%	60mph AUDI	Red	West End Road-Alongside the Alfred Palmer Memorial...		2026-03-16	16:31	30	Letter Sent	✓
		Reading Stratfield Mortimer CSW								
*****	86%	56mph FIAT	Beige	West End Road-Alongside the Alfred Palmer Memorial...		2025-06-27	16:56	30	Letter Sent	✓
		Reading Stratfield Mortimer CSW								
*****	66%	50mph CITROEN	Red	West End Road-Alongside the Alfred Palmer Memorial...		2026-03-16	15:55	30	Letter Sent	✓
		Reading Stratfield Mortimer CSW								
*****	66%	50mph CITROEN	Silver	West End Road-At farm gate and public footpath to ...		2026-04-01	17:00	30	Letter Sent	✓
		Reading Stratfield Mortimer CSW								
*****	66%	50mph BYD	Grey	St Catherines Hill-On grass verge just after the j...		2025-06-26	08:18	30	Letter Sent	✓
		Reading Stratfield Mortimer CSW								
*****	56%	47mph BMW	White	West End Road-Alongside the Alfred Palmer Memorial...		2025-06-27	16:17	30	Letter Sent	✓
		Reading Stratfield Mortimer CSW								
*****	56%	47mph KIA	White	West End Road-At farm gate and public footpath to ...		2026-04-01	16:39	30	Letter Sent	✓
		Reading Stratfield Mortimer CSW								
*****	53%	46mph FORD	Black	West End Road-Alongside the Alfred Palmer Memorial...		2026-03-16	17:04	30	Letter Sent	✓
		Reading Stratfield Mortimer CSW								

Note that, apart from one in St Catherines Hill, these are all on West End Road

Conclusions

The biggest problem with speeding is in both direction on West End Road. Given the amount of evidence we have of this over a long period would the council wish to approach TVP and WBC to ask for possible enforcement such as a camera van or police officers with radar guns.

Appendix 1 Smiley SID Sites

HHN is on Hammonds Heath by the big Fairground gate with SID on the nearside for traffic going North away from the Village. (SMPC ref SVAS01, WBC ref 80000228)

HHS is the same site as HHN but with SID on the offside of the road for traffic going South from the Burghfield direction. (SMPC ref SVA02, WBC ref 80000227)

CATS is in is St Catherines Hill on the nearside of the road near Birchland Close for traffic heading South away from Burghfield/Victoria Road. (SMPC ref SVAS03, WBC ref 80000226)

CATN is the same site as CATS but with SID on the offside of the road for traffic going North towards Burghfield/Victoria Road. (SMPC ref SVAS04, WBC ref 80000225)

CATJ is St Catherines Hill on the nearside of the road for traffic going North towards Burghfield/Victoria Road. It is further north than CATN, on the road sign advising of the junction with Victoria Rd and the road with no name. SMPC ref SVAS05, WBC ref 80000224) (This site has not yet been used).

GR is on Victoria Rd for traffic coming in from Burghfield. It is on the roundabout sign about 100 yards west of the Groves Lea / Stephens Rd mini roundabout (SMPC ref SVAS06, WBC ref 80000223)

VICE is Victoria Road east of the library on the Elderly People sign for traffic going East. (SMPC ref SVAS07, WBC ref 80000235)

VICW is the same post as VICE with SID on the offside for traffic going West. (SMPC ref SVAS08, WBC ref 80000236)

KILNE is on the Street on the bend before Kiln Lane for traffic heading East down The Street. SMPC ref SVAS09 WBC ref 80000231)

KILNW is the same post as KILNE but on the offside for traffic coming west up The Street. SMPC ref SVAS10, WBC ref 80000232)

WESTW is the far end of West End Road after 'the farm gate' for traffic heading west out of the village. SMPC ref SVAS11, WBC ref 80000233)

WESTE is the same post as WESTW but is on the offside of the road for traffic heading east into the village. SMPC ref SVAS12, WBC ref 80000234)

Sites have just been added for The Street at the junction Pitfield Lane both directions and in West End Road incoming near Stephens Firs. First deployments are taking place.

Appendix 2. Deployments of Smiley SIDs (updated 20 June 2026)

REF	Start	End	No vehicles	50% mph	85% mph	95% mph	Av Speed	Max Speed	Time of Max	Max 24h volume	% > limit
GR1	06/11 @1100 Thur	09/11 @1100 Sun	7119	29.3	34.2	38.1	30.2	68.6	Thurs 1900	2805	52.6
GR2	11/11 @1100 Tues	17/11 @1300 Mon	15582	29.3	34.0	37.9	30.2	61.1	Sat 2000	2995	52.8
GR3	18/11@1200 Tues	24/11@0700 Mon	17291	29.4	34.1	38.0	30.4	79.9	Sun 1500	3635	54.1
GR4	27/11@1400 Thur	03/12@1300 Wed	17076	29.3	34.1	37.4	30.1	66.0	Sun 2100	3413	55.1
GR5	05/12/@1400Fri	11/12@1500 Thur	16814	29.4	34.1	37.9	30.3	67.6	Sun 0300	3143	54.3
GR6	20/04@0000Mon	29/04@2100 Wed	29176	29.8	34.5	38.1	30.7	59.7	Thu 0000	3410	58.0
GR7	11/05 @1500Mon	16/05 @1700 Sat	14962	29.6	34.1	37.7	30.5	65.3	Fri 15 1700	3590	56.4
GR8	21/05 @1600 Thur	31/05 @0900 Sun	25284	30.1	34.9	38.8	30.9	70.4	Mon 25 2200	3138	61.5
HHS1	06/11@1200Thur	11/11 @2359 Tues	7575	30.1	35.9	40.1	31.1	68.6	Fri 1800	2650	60.6
HHS2	14/11@1600 Fri	22/11@1900 Sat	7806	31.4	37.8	41.8	32.7	67.8	Tues 1500	1275	71.6
HHS3	23/11@0000 Sun	01/12@1500 Mon	7989	31.4	37.8	42.3	32.7	69.0	Tues 1500	1194	72.2
HHS4	22/12/@)0000 Mon	09/01@0300 Mon	10418	30.7	37.1	51.5	31.8	75.6	Thur 01 1700	1327	66.1
HHS5	10/01@0000 Sat	27/01@1800 Tues	15975	30.9	36.9	41.1	32.1	63.0	Sat 17 1400	1572	68.8
HHN1	3/12 0000 Wed	14/12 Sun 2359	6282	28.2	32.4	36.1	28.6	53.6	6 in category	985	41.2
HHN2	14/12 @ 1200 Sun	22/12 @1200 Mon	4793	28.1	32.1	35.5	28.4	73.0	Wed @1800	972	39.7
CATN1	22/12@1100 Mon	05/01 @1500 Mon	9288	30.5	35.8	40.2	31.5	69.1	Sat 27 1700	947	66.5
CATS1	05/01@0000 Mon	22/01 @0100 Thur	14193	29.8	34.9	38.9	30.6	63.2	Mon 12 1400	1121	57.3
KILNE1	02/02 @1200	15/02 @ 1500 Sun	49878	29.5	33.3	36.5	30.4	62.3	Wed 04 0200	4425	56.4
KILNE2	15/02 @ 0000 Sun	28/02 @ 0700	49178	29.9	33.7	36.8	30.7	61.0	Wed 18 0000	4858	61.2
KILNE3	20/04 @ 0000 Mon	28/04 @ 2100	33750	30.0	33.8	36.9	30.8	85.6	Thur 23 0200	4376	61.5
KILNE4	07/05 @ 1400 Thur	18/05 @ 1700 Mon	40759	30.1	34.0	37.1	31	67.0	Sun 17 2000	4285	63.7
KILNE5	01/06 @1000	08/06 @ 2400 Mon	30128	30.2	34.1	37.3	31	62.1	Sat 6th 2300	4468	63.9
WESTW1	02/02 @ 1100 Mon	15/02 @0000 Sun	30567	32.0	38.3	42.6	33.3	73.3	Fri 13 0000	2824	77.7
WESTW2	09/03 @ 1500 Mon	20/03 @1600 Fri	28066	32.6	39.0	43.3	34.1	78.8	Thur 19 1900	2804	82.5
WESTE1	17/02 @ 0000 Tues	02/03 @1800 Mon	27823	32.7	38.1	41.5	33.5	61.6	Mon 02 1400	2613	78.6
WESTE2	26/03 @1500 Thurs	09/04 @ 1000 Thurs	23658	33.1	38.7	42.2	34	64.9	Thur 02 1700	2264	81.2
VICE1	09/03 @ 1500 Mon	20/03 @0800 Fri	30333	27.7	31.4	34.9	28.3	80.1	Mon 20 0000	3248	33.4
VICE2	20/03 @ 0000Fri	26/03 @1500 Thu	17711	27.9	31.5	35.2	26.6	80.1	as above	3569	34.9
VICW1	27/02 @000 Fri	13/04 @1600 Mon	33517	27.2	30.9	34.3	27.3	89.8	Sun 12 1700	2392	29.2