

# SPEEDING IN THE VILLAGE

Stratfield Mortimer Parish Council is committed to reducing speeding in the village. We currently use two pieces of equipment (SID and ASWC).

## Speed Indicator Device (SID)



SID shows the speed of a vehicle as it approaches.

The display changes as speed varies.

The aim is to encourage drivers to keep within the speed limit.

Sites must be approved by West Berkshire Council (WBC) and we have about 15 sites in the village.



eg: the highlighted cell shows 3 vehicles 30 to 35 mph in the minute starting 08:18.



## Automatic Speed Watch Camera (ASWC)





ASWC photographs vehicles, records speeds and reads the number plates. It is operated under the Community Speedwatch Scheme, a national organisation to which Thames Valley Police (TVP) have joined.



The overall aim is to reduce speeding. Hence the camera must be manned by two operators in Hi-Viz jackets as this is part of the deterrent.

Worst offenders are reported to Thames Valley Police (TVP).

TVP send out a warning letter to those offenders and retain the information.

A second report (from a camera anywhere in the TVP area) generates a stronger letter and a third report can result in a visit from the police.

The ASWC records the speed of oncoming vehicle when it first enters the radar beam and then takes the photograph when it is nearer.

We have the **only ASWC** in West Berkshire and was jointly funded by SMPC and WBC.

Other Speedwatch groups rely on handheld radar devices that show the speed. They typically need 3 or 4 volunteers at the roadside as they have to write down speed, number plate, make and colour of each vehicle.

We download the images and an app takes this file and links to DVLA and returns the make and colour on record for that number plate.

We check these are correct and then report to CSW who pass on to TVP.

We delete images after 8 weeks. **Only TVP have access to owner details.**

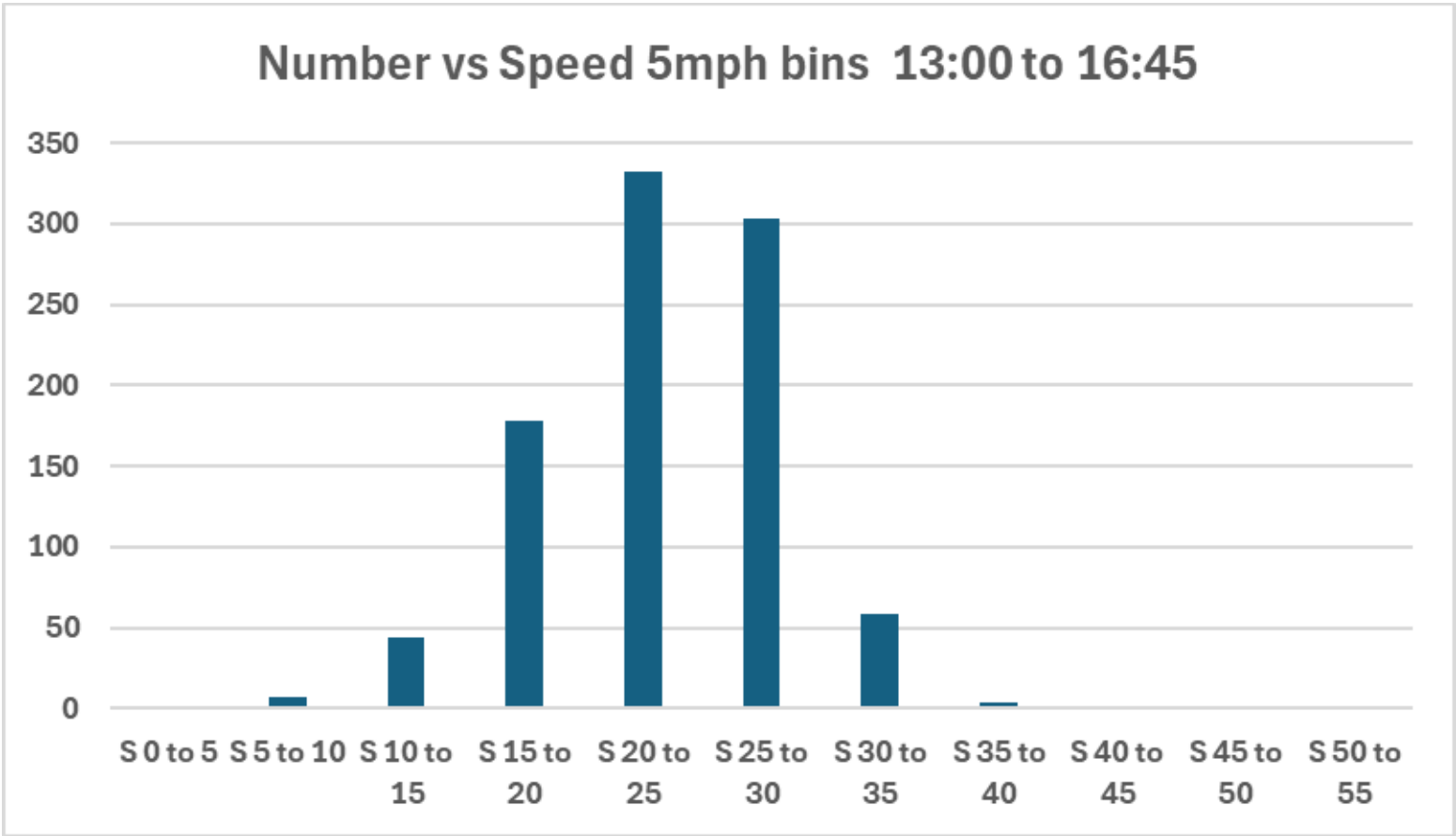
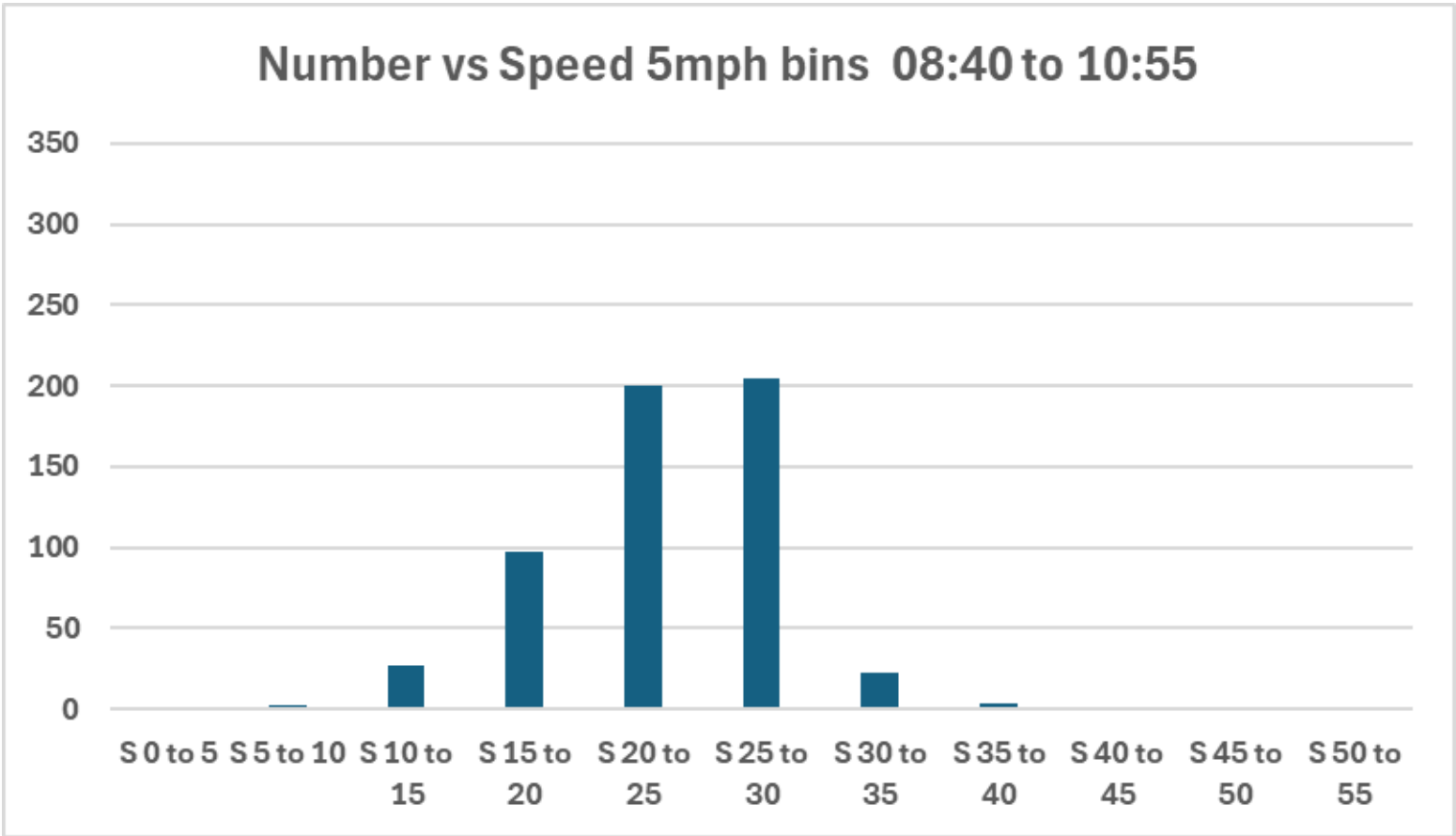
# SOME SID RESULTS

The Street at the Pillbox (near junction with Mortimer Lane) traffic going out of village.

Thursday 28<sup>th</sup> January 2025    08:40 to 10:55 and 13:00 to 16:45.

Number under 30 mph	1395
Number 30 to 35	82
Number 35 and over	8
Total	1485

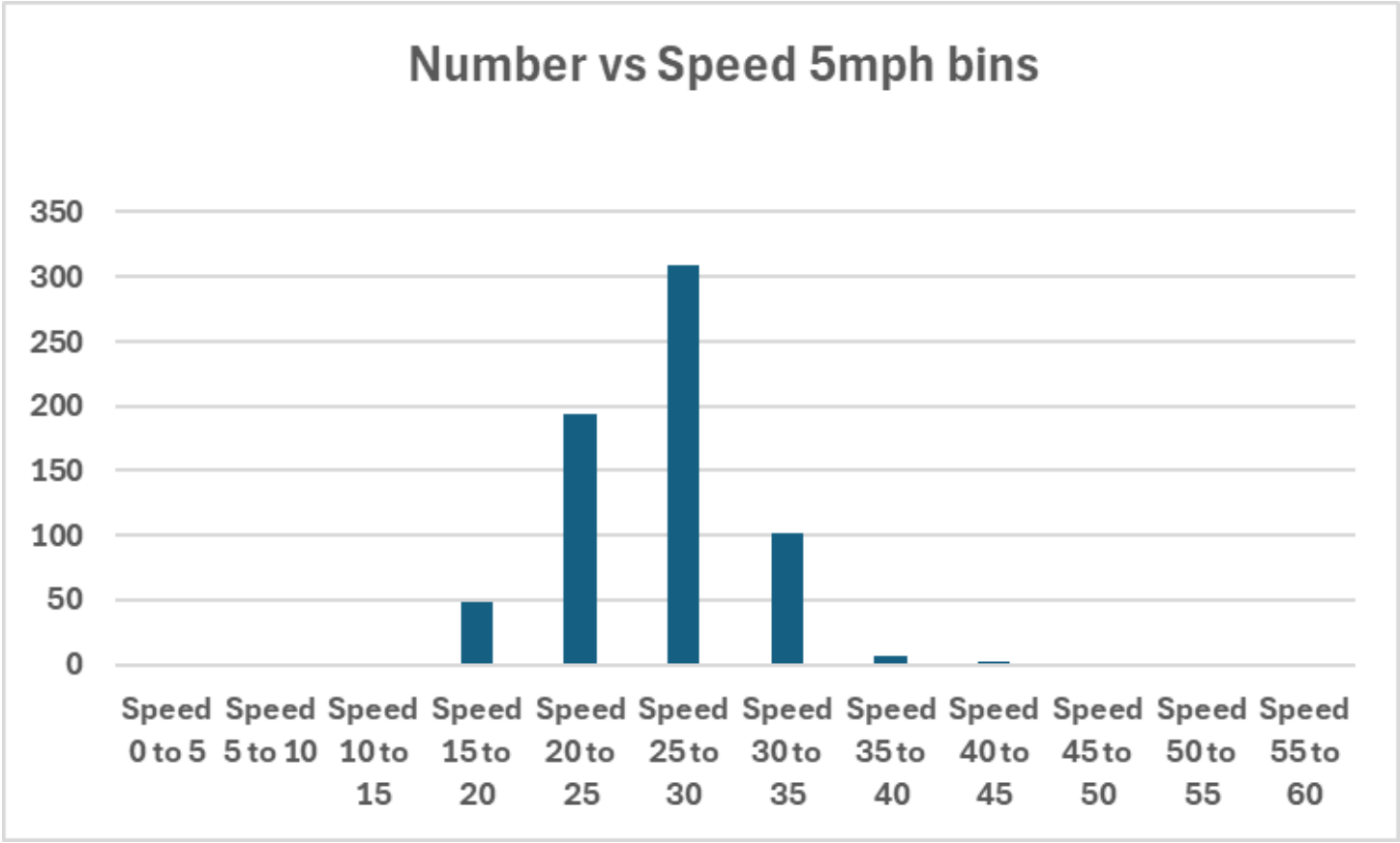
7 @ 35 to 40 mph  
1 @ 40 to 45 at 14:25  
Too small to show on lower graph



The Street just below the light-controlled crossing, traffic going down towards Pitfield Lane.

Wednesday 5<sup>th</sup> March 2025    07:00 to 08:30.

Number under 30 mph	551	7 @ 35 to 40 mph 2 @ 40 to 45 mph both at 7:10 16% @ 30 to 35 mph
Number 30 to 35	102	
Number 35 and over	9	
Total	662	



Some other recent results (% is percentage over 30 mph):

Date	Location	Dir	Time	Total	≤30	>30	Max	%
12/06	Hammonds Heath	N	3:10 4:30	98	71	17	<40	17
18/06	Victoria Rd Library	E	8:00 9:20	445	426	19	<40	4
24/06	Nr College Piece	W	7:10 8:25	415	345	70	<40	17

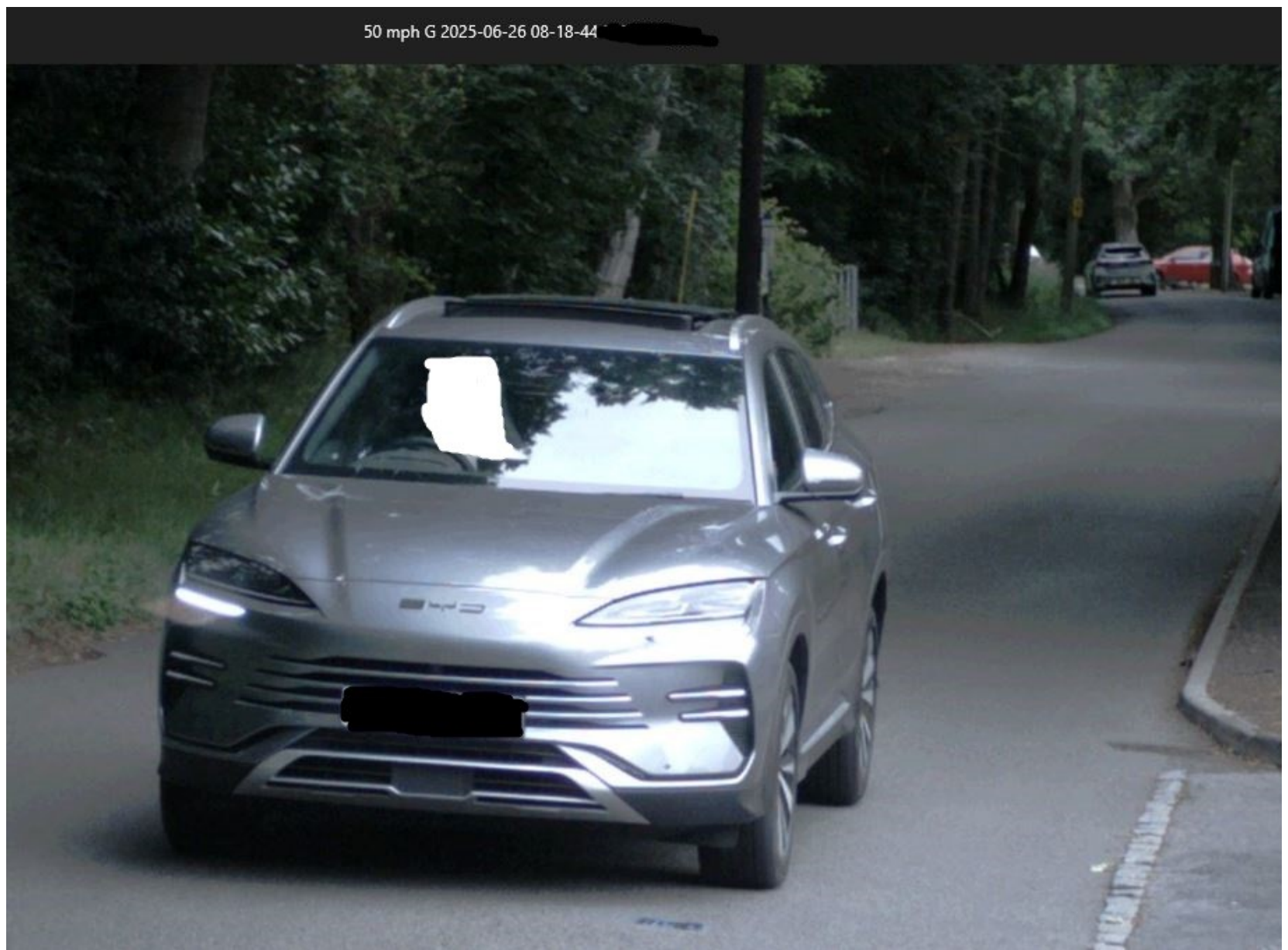


## ASWC Session St Catherines Hill Southbound

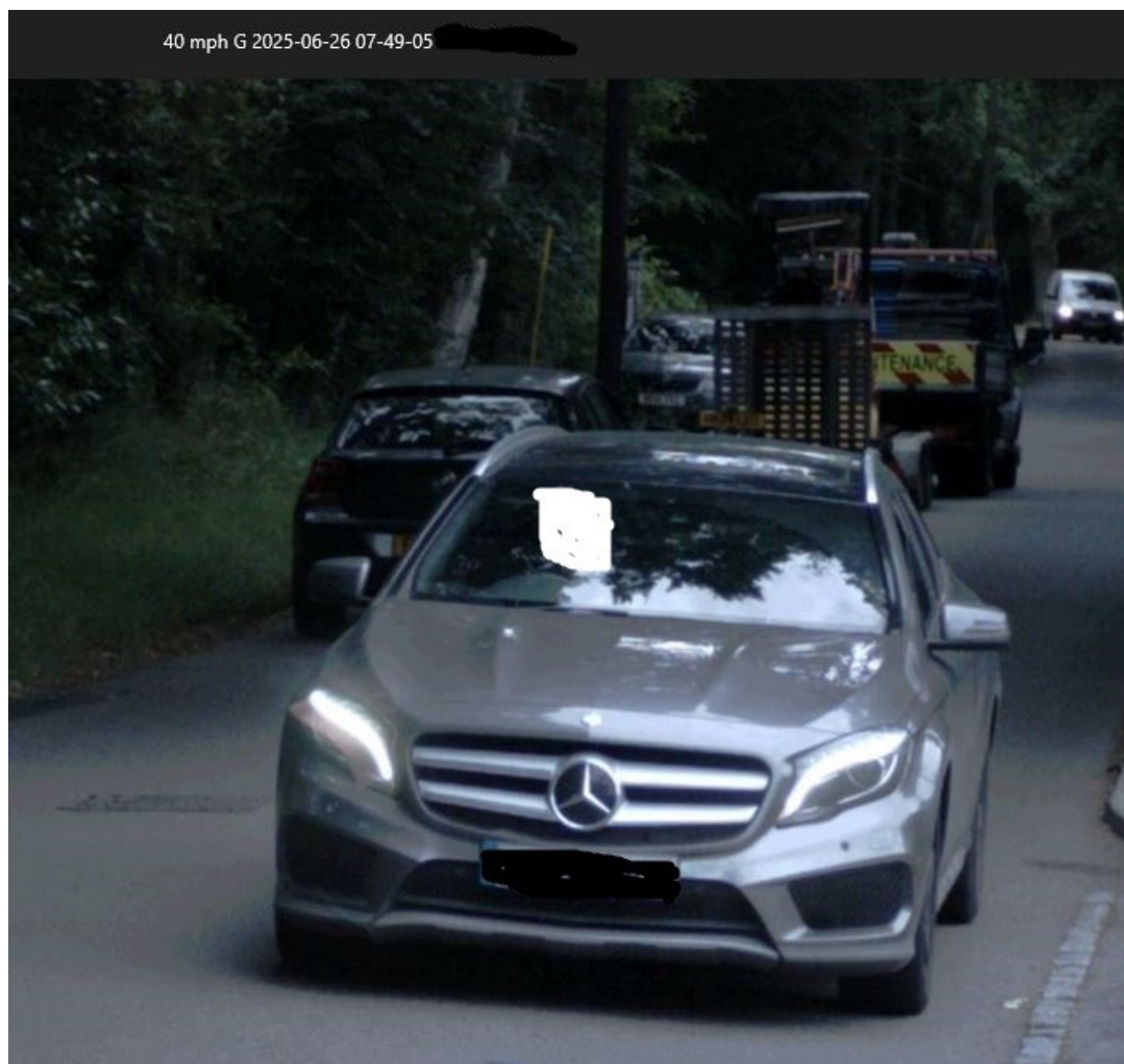
Thursday 26<sup>th</sup> June 2025 07:15 to 08:20

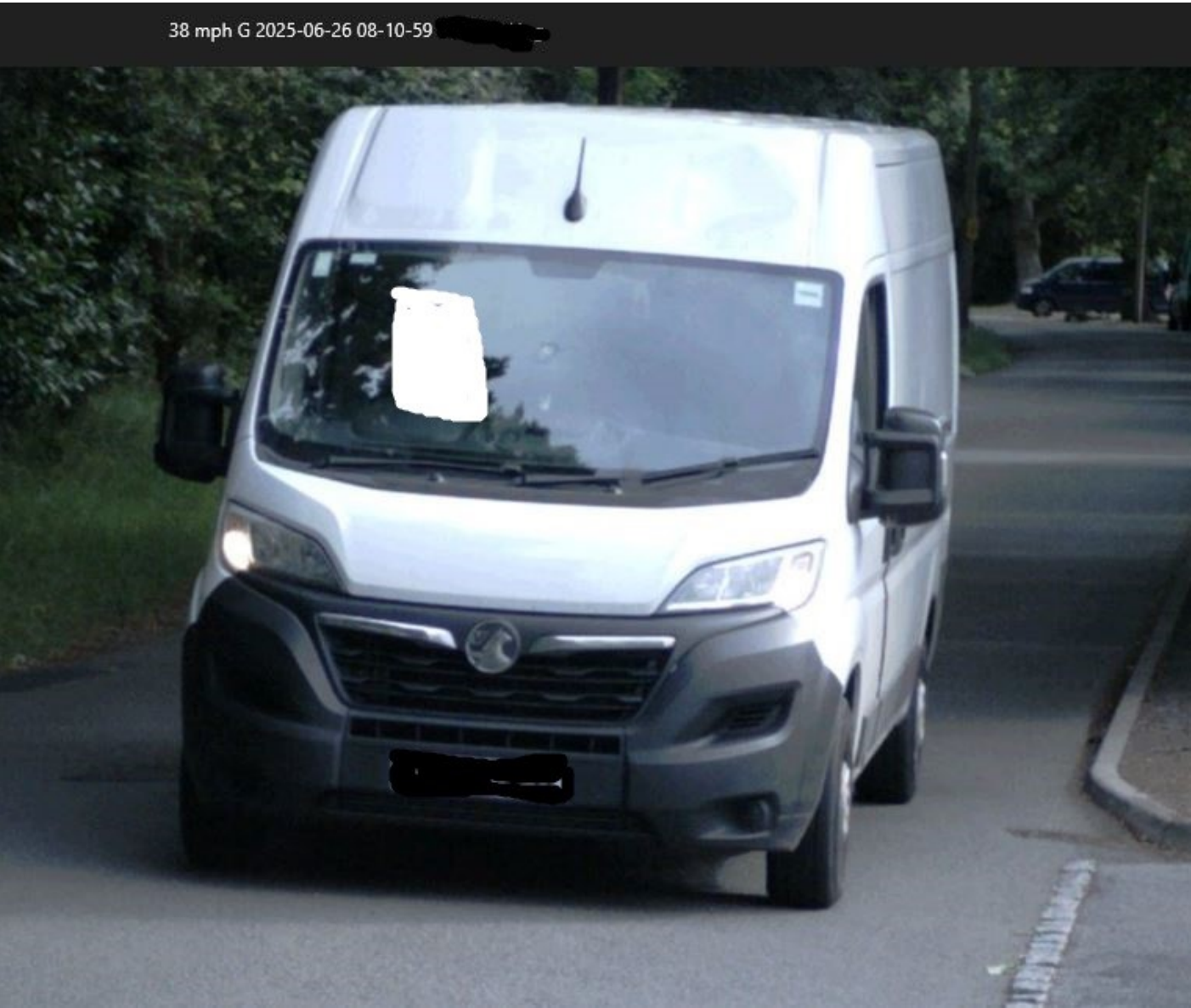
Note the filename gives speed and time followed by registration number which has been obscured as have the number plate and driver.

50  
mph

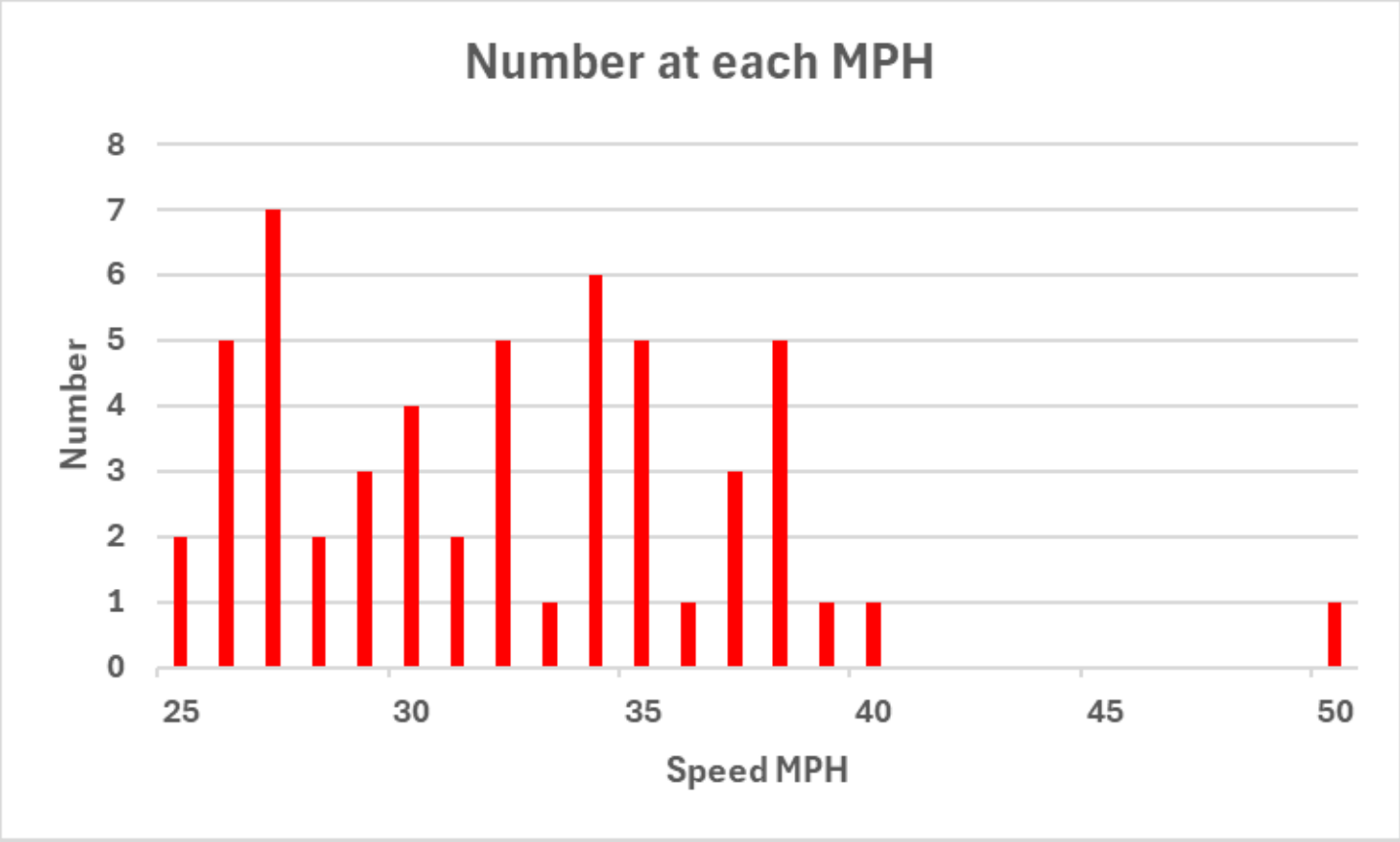


40  
mph





38  
mph



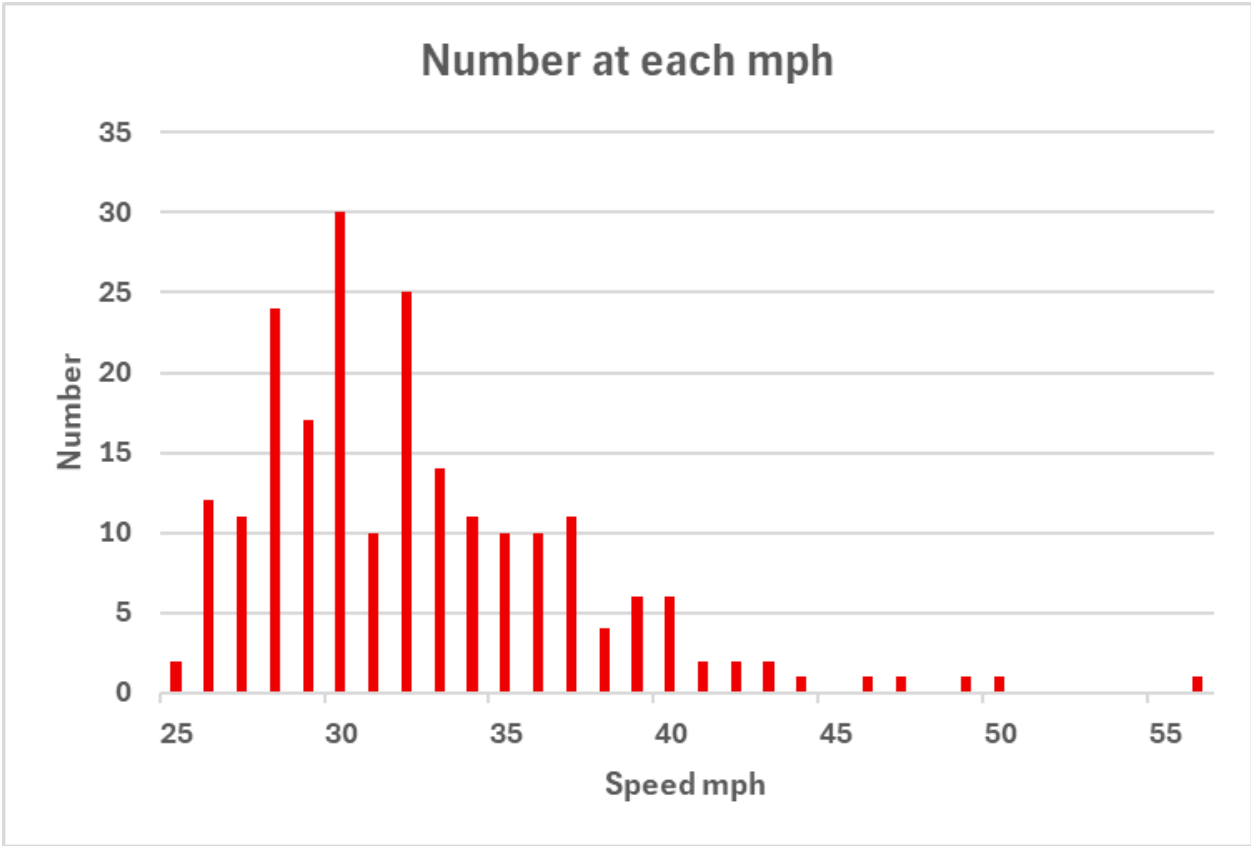
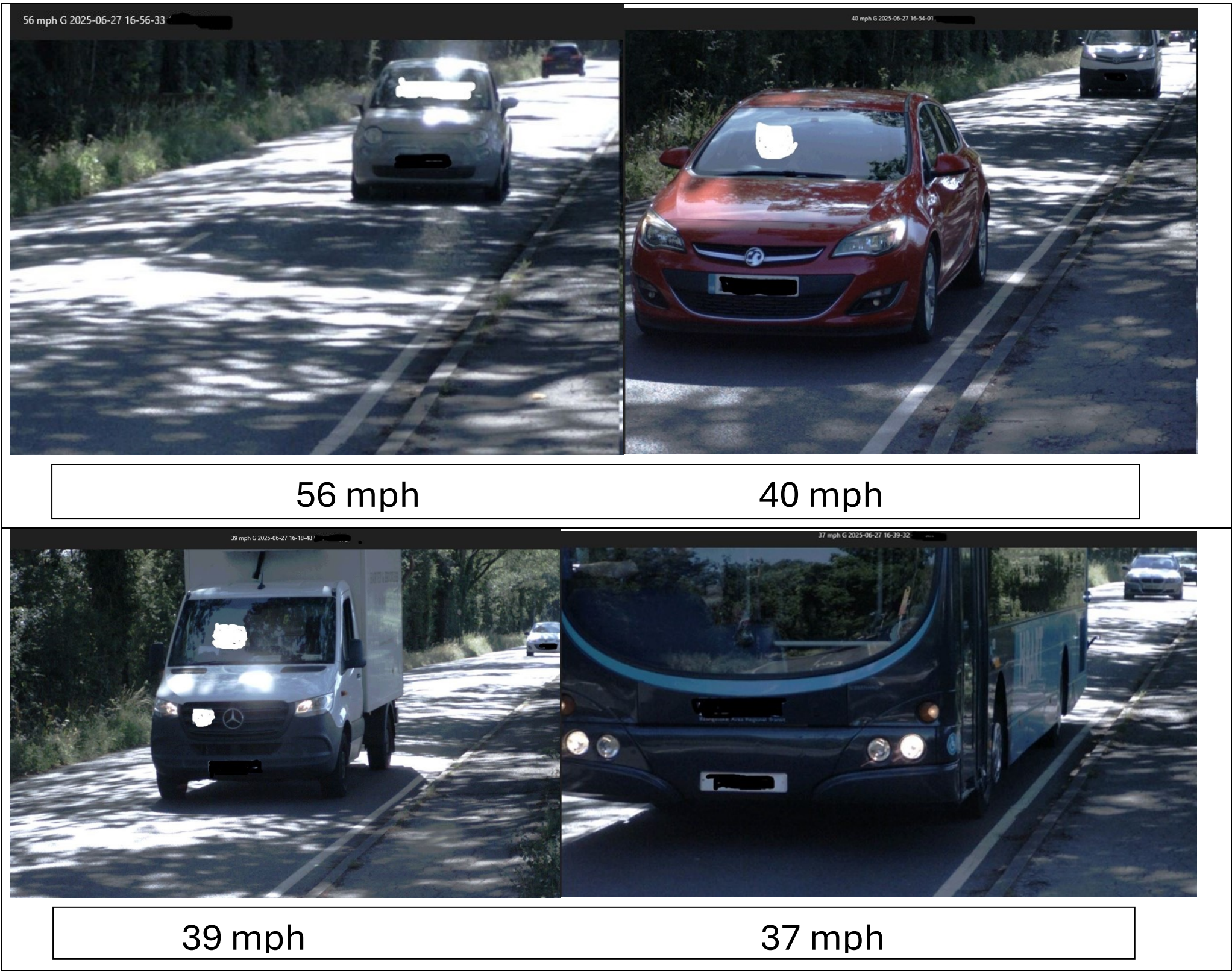
Band	Number	Percent
mph		
25 to 30	23	42.6%
31 to 35	19	35.2%
36 to 40	11	20.4%
over 40	1	1.9%
Total	54	

Note peaks at 34,  
35 and 38 mph  
12 reported to TVP



ASWC Session West End Road Eastbound

Friday 27<sup>th</sup> June 2025 16:10 to 17:05



Band	Number	Percent
mph		
25 to 30	96	44.7%
31 to 35	70	32.6%
36 to 40	37	17.2%
over 40	12	5.6%
Total	215	



# ASWC Session St Mary's Church Eastbound

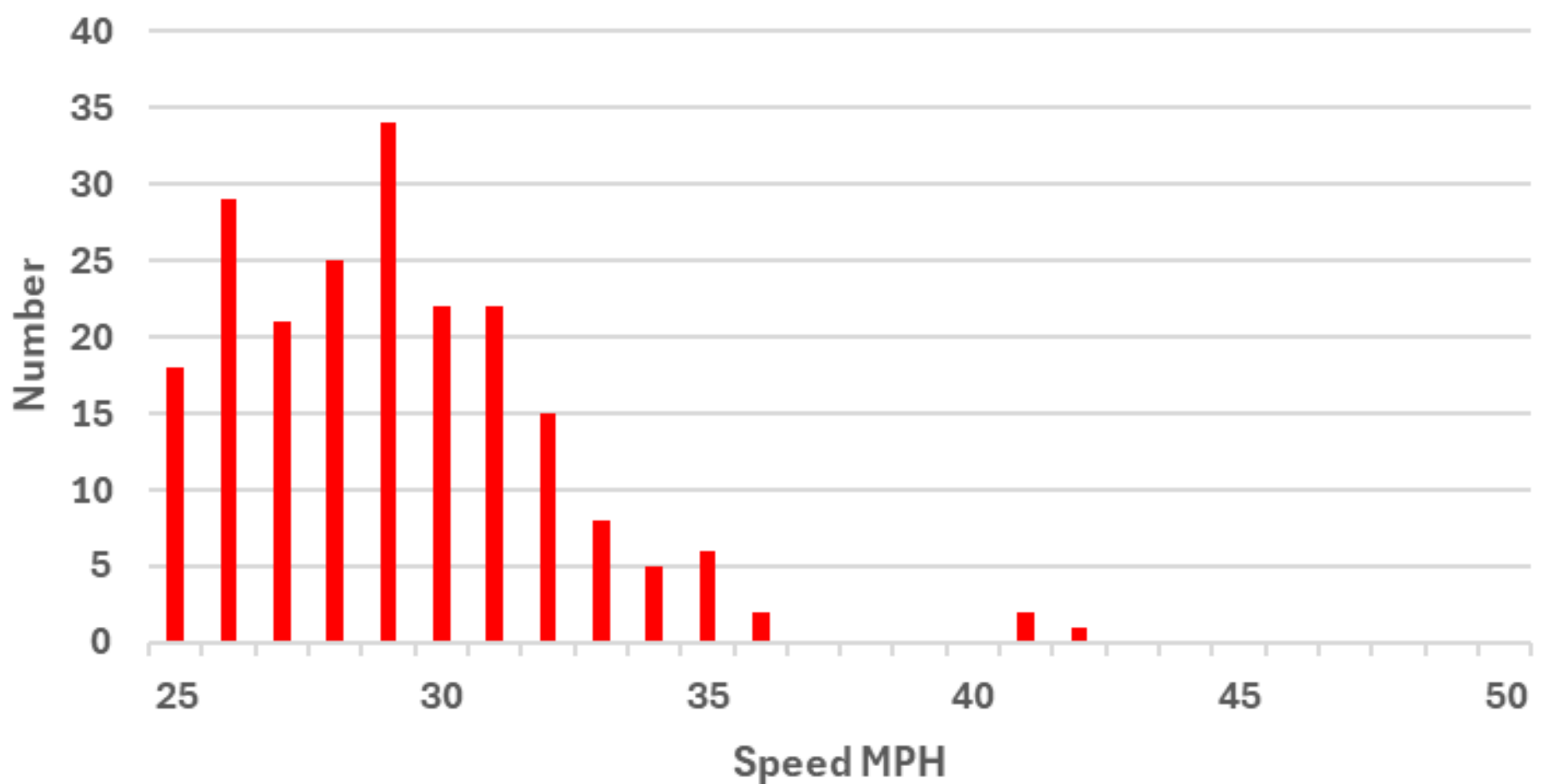
Friday 3<sup>rd</sup> July 2025 07:15 to 08:35

42 mph G 2025-07-03 08-28-03 [REDACTED]



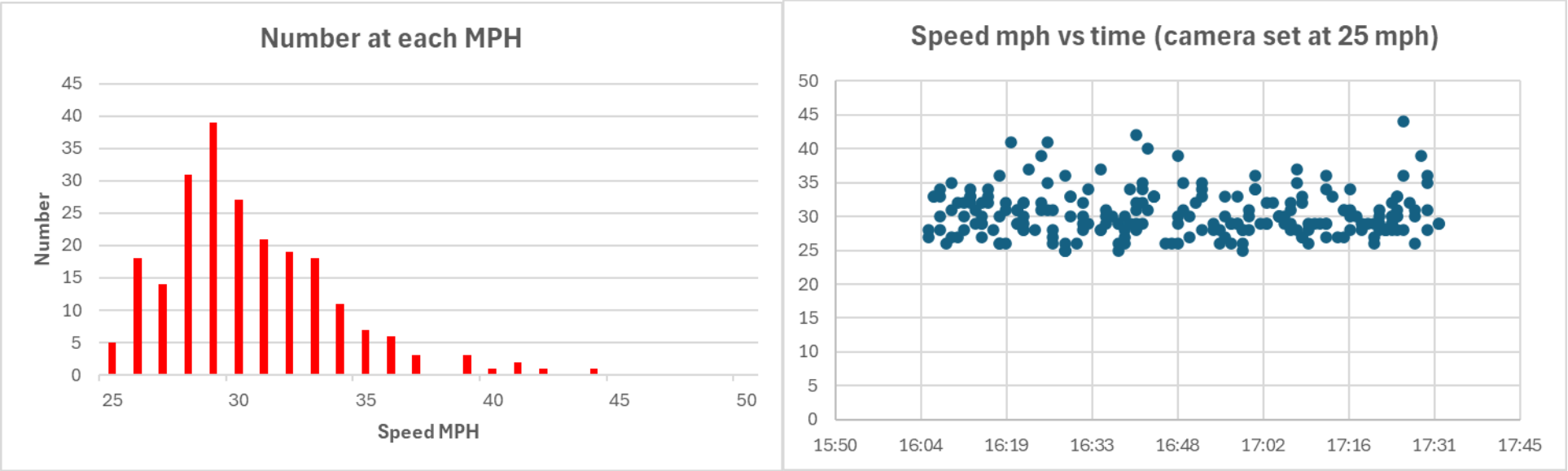
42 mph

## Number at each MPH

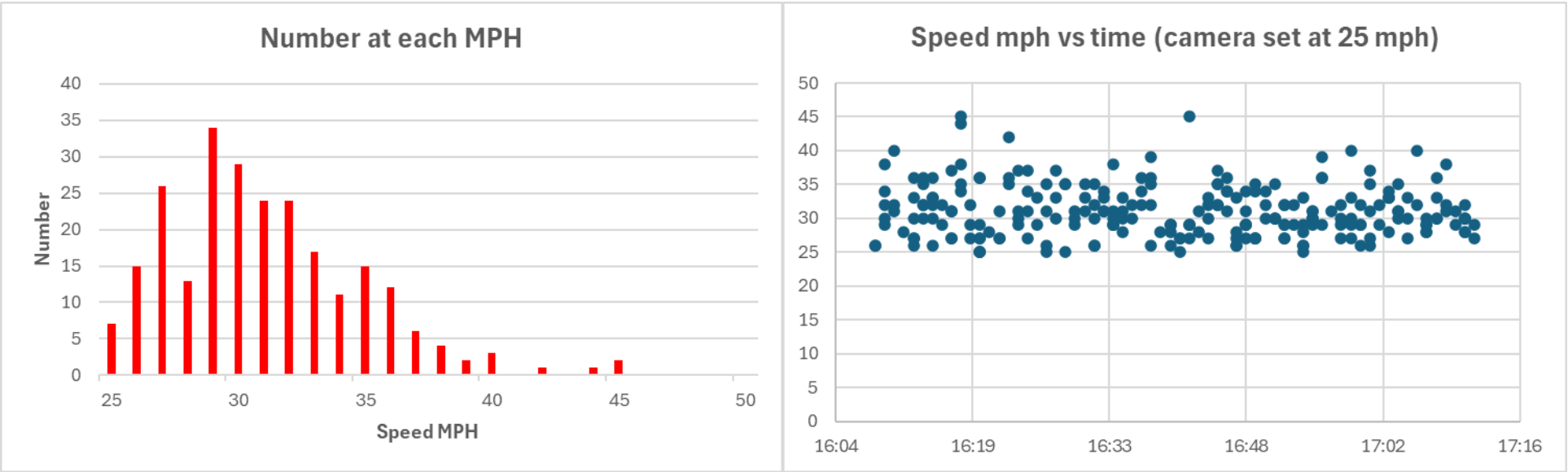




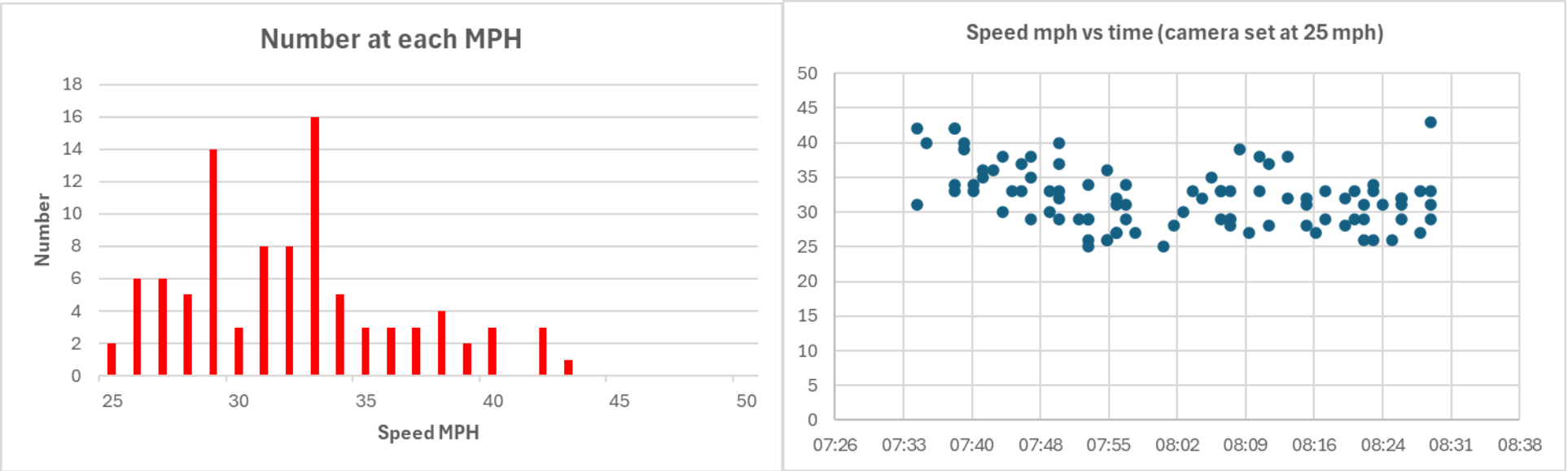
ASWC Session Pillbox The Street Friday 25<sup>th</sup> April 2025 16:05 to 17:32     17 reported to TVP



ASWC Session Alfred Palmer Gate West End Road Thursday 1<sup>st</sup> May 2025 16:09 to 17:12     28 reported to TVP

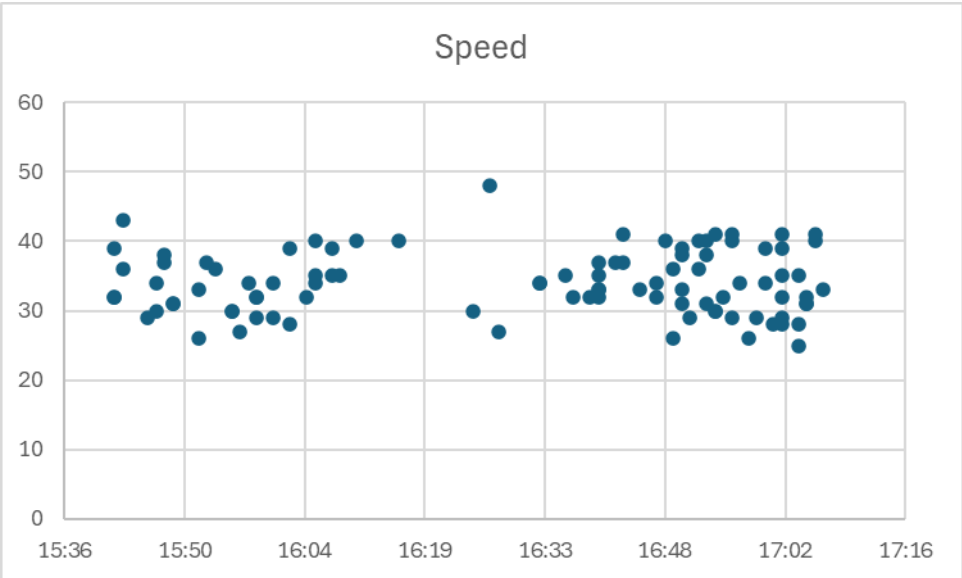


ASWC Session St Catherines Northbound Monday 28<sup>th</sup> April 2025 07:35 to 08:29     18 reported to TVP

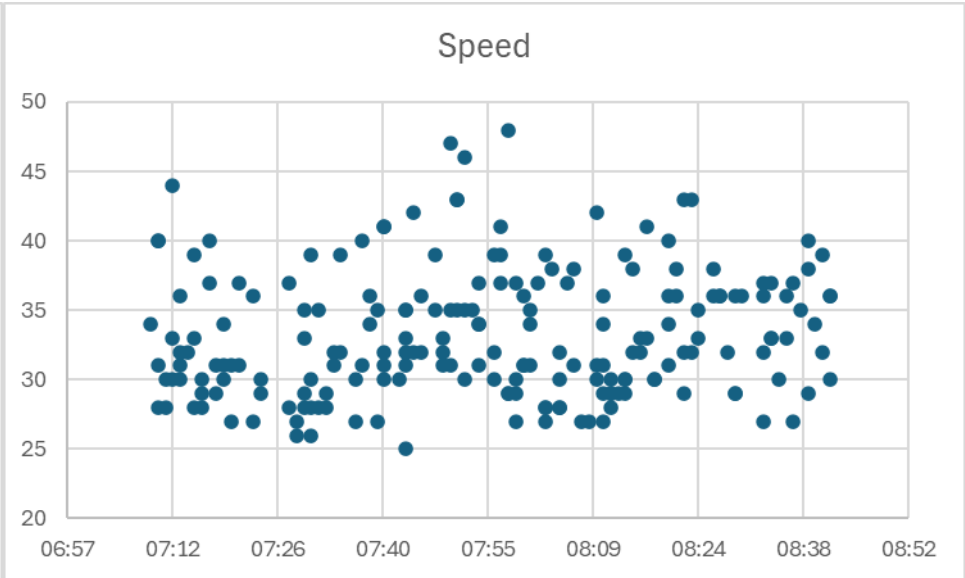


ASWC Sessions Far end West Rd going out of village

26 Feb 2025 15:35 to 17:10     33 reported to TVP



20 March 2025 07:05 to 08:50     62 reported to TVP





## Based on our SID and ASWC data speeding is worst at:

1. West End Road- west of the mini roundabout - both directions
2. St Catherines Hill – both directions
3. Hammonds Heath – both directions
4. Victoria Road – near College Piece – both directions
5. The Street – both directions but worst heading down

However, these data are mostly from the morning and afternoon “rush hours” with some from mid-day sessions.

We are aware that all roads (such as Victoria Road and the Street) do have some excessive speeders especially when the roads are relatively empty.

These are hard to monitor, we can only use our equipment during the day.



SMPC has just purchased two ‘Smiley SIDs’. These will be moved around the village to urge drivers to slow down.

They will also give 24 hour speed statistics.

Many vehicles in the village are doing 30 to 35 mph. Please consider that a car at 35mph has 36% more kinetic energy than one at 30 mph which increases the risk of injury.

We would like to have more ASWC and SID sessions. For that we need more volunteers. You would always be working with another volunteer and basically involves being there and watching the equipment. Sessions would be to suit you. Even if you did an hour occasionally, that would be another session. We provide simple training.

If we can persuade you, please leave your details or contact

[theClerk@stratfield-mortimer.gov.uk](mailto:theClerk@stratfield-mortimer.gov.uk) or phone 07436 807543. (MDD July 2025)